

Screw conveyor is the key equipment in a mixing station. As the main component of screw conveyor, gear reducer directly determines the service life and efficiency of screw conveyor.

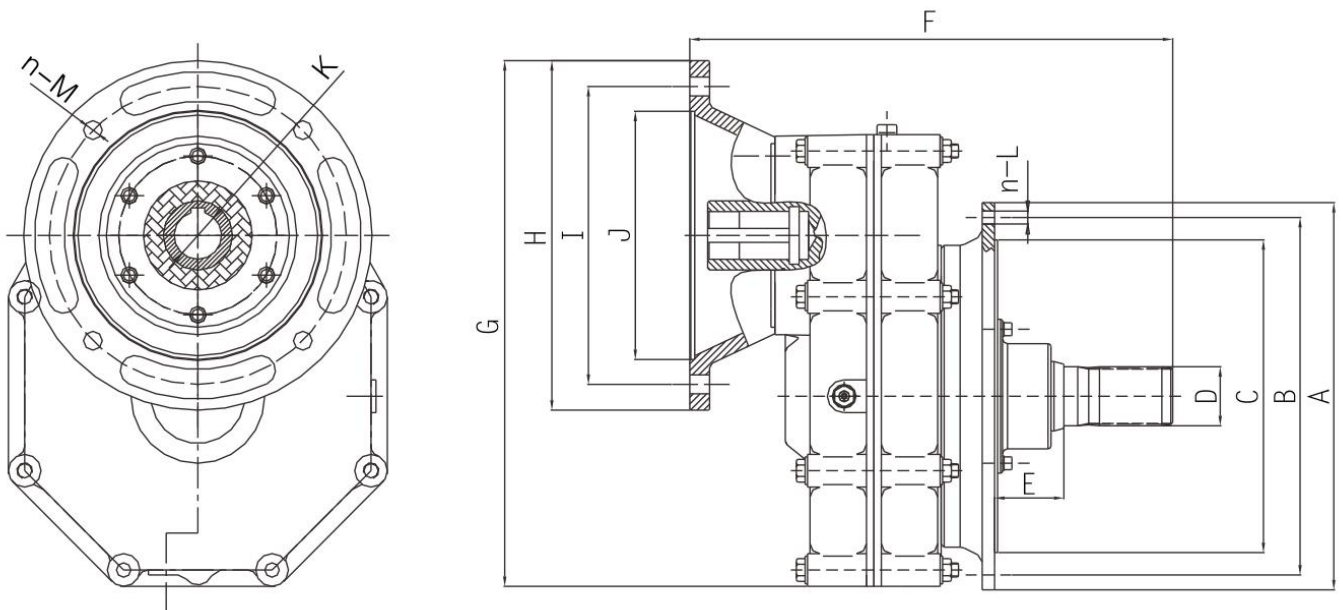
SM series is a heavy duty design hardened cylindrical gear reducer, which is applicable to sicoma 219, 273 and 325 screw conveyors.

Product Features

- Cast iron box, round water caltrop design, reasonable structure and beautiful appearance
- involute hard tooth surface grinding gear, stable operation and lower noise
- unique patented shaft end sealing design, no material leakage
- input power: 5.5kw-22kw
- Spline output shaft, quick installation



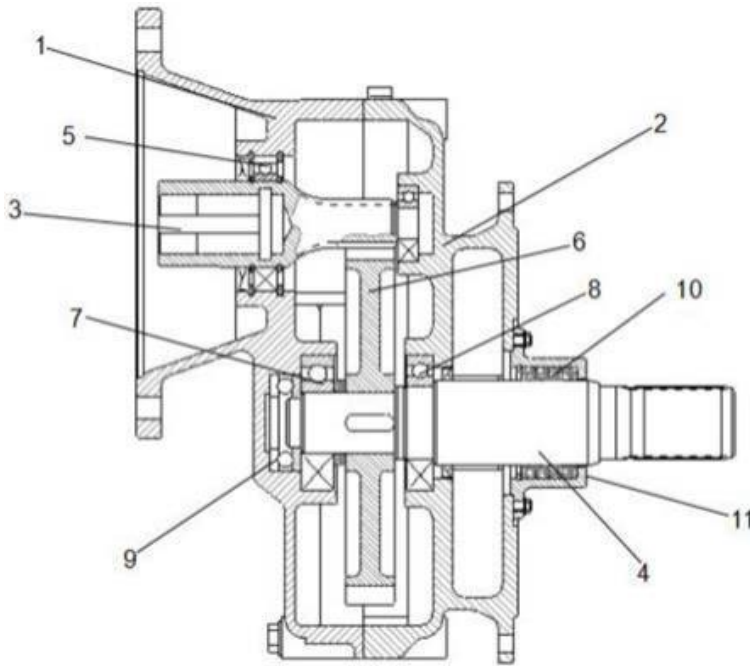
Specification Parameters



Model	ratio i=	Motor Power (Kw)	Size(mm)											
			A	B	C	D	E	F	H	I	J	K	n-M	n-L
SM219A	7	5.5/7.5	280	250	210	40	70	273	300	265	230	38	4X Φ13	8X Φ13
SM219B		11										42		
SM273		11/15										330		
SM325	10	18.5/22	390	360	315	60						48		

Unit: mm

Structure Diagram



1. Motor end flange
2. Front shell
3. Input shaft
4. Output shaft
5. Oil seal
6. Big gear
7. Shaft bearing
8. Bearing
9. Thrust ball bearing
10. Seal ring (felt ring, oil seal, iron gasket)
11. Seal end cap

1. When the machine leaves the factory, no lubricating oil is added for the convenience of transportation. Before use, gear lubricating oil must be added. Gear lubrication: oil immersion lubrication is adopted, and the oil immersion height is about one sixth of the radius of the large gear.
2. When the reducer is running, the lubricating oil in the housing will generate pressure with the increase of speed and temperature. The machine body is equipped with brass dustproof pressure breather cap, the rubber pull ring on the vent cap must be pulled off before the equipment is installed and operated.
3. Check the operation, sealing and smoothness of the reduction gearbox once a week to see if there is any abnormal noise, oil leakage, etc
4. The oil shortage shall be made up in time, but shall not exceed the oil level line.
5. Check the combined fastening of the whole machine once a month.
6. The reducer needs to be replaced with new oil after 100 hours of operation, and it needs to be replaced every 1000 hours of operation in the future. The oil drain plug is provided with an oil drain hole at the bottom of the reducer to drain the dirty oil.
7. 325 models are equipped with a special oil filler pipe.

Remarks:



Danger - Warning

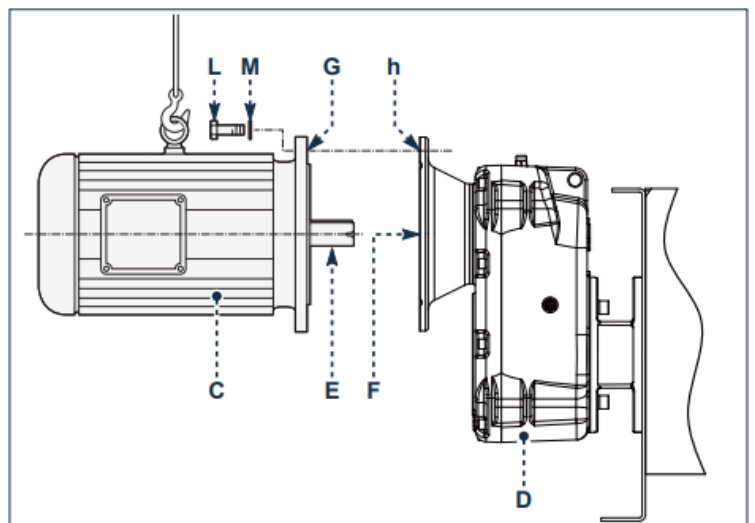
Before carrying out the operations, read the safety prescriptions and the safety recommendations for installation.

1. After the installation of the reducer, it is necessary to add gear oil. After adding gear oil, remove the black rubber pull rope of the ventilation cap! Otherwise, it will cause a reduction in the service life of the gearbox!



2. Preassembling the electric motor
Proceed as described.

- 1) Place the one-piece screw feeder/conveyor or section with gear reducer assembled without electric motor in a horizontal position.
- 2) Place the motor (C) near the gear reducer coupling flange.
- 3) Lubricate the shaft (E) of the electric motor and the seat (F) of the gear reducer with the prescribed lubricant.
- 4) Apply the silicon sealant on the coupling surfaces (G and h).
- 5) Fit the motor on the gear reducer



3. Electrical connection

Use electric cables having cross section appropriate to the power absorption of the motor of the equipment concerned.

Strictly install the wiring method marked on the motor nameplate for wiring.

△ is delta connection

Y is star connection.

