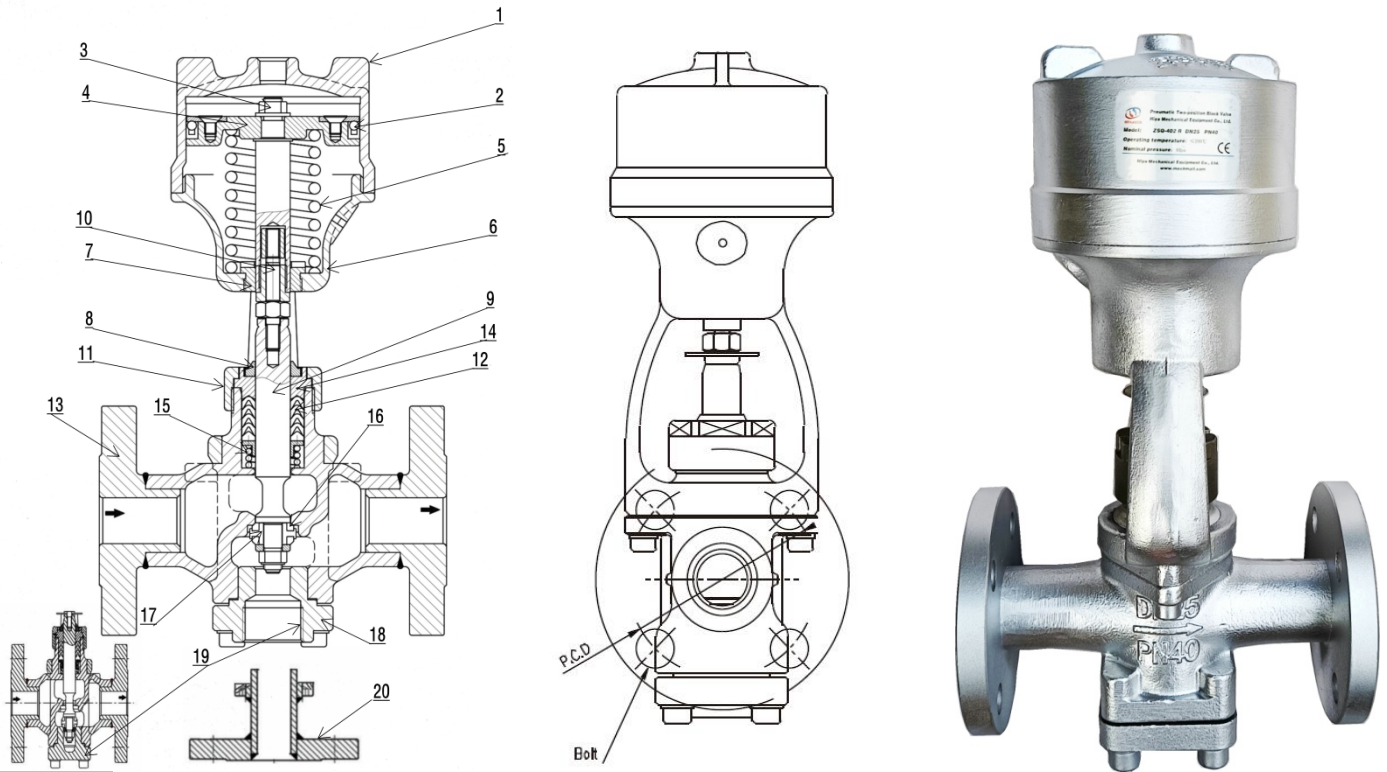


ZSQ valves were primarily developed for the rationalization and automation of processes used in the tire, plastic and rubber manufacturing industries but are suitable for most applications requiring reliable on/off control of Steam, Nitrogen and Hot or Cold water. According to the signal supplied by the control instrument, it opens or cuts off the flowing medium (water, steam, etc.) in the pipeline to meet the requirements of the system for pressure, temperature, flow and other industrial parameters.

Standard: HG/T3236-1989

Flange connection: JIS, API or DIN.

STRUCTURE NORMAL CLOSE



PART LIST

NO.	Part Name	Material	NO.	Part Name	Material
1	Actuator	QT500-7	11	Gland nut	ZCr13
2	Piston seal	F4	12	Gland packing	PTFE
3	Tension bolt	1Cr18ni9	13	Flange	1cr18Ni9
4	Piston	Aluminum	14	Gland	H62
5	Piston spring	60sizMn	15	Packing spring	1cr18Ni9
6	Yoke Stand	QT500-7	16	Disc ring	PTFE+CF
7	Guide bushing	H62	17	Disc adapter	2cr13
8	Dust seal	F4	18	Lower seat plug	1cr18Ni9
9	Stem	1cr18Ni9	19	* Replacement location	-
10	Piston rod	ZCr13	20	(3 way) Flange seat	1cr18Ni9

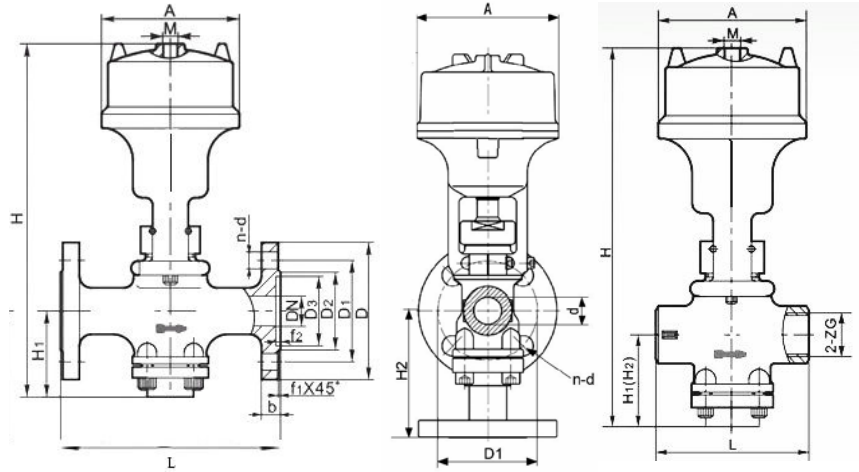
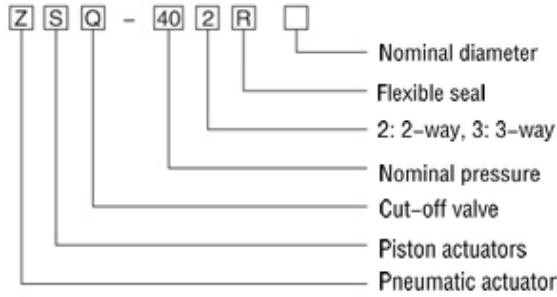
Note: 19* At this position, 2way piston valve installation is a lower seat plug, when we use it as a 3way piston valve, replace this plug with a 3way flange seat.

SPECIFICATION

Model Name	2way/3 way piston valve	Operating Pressure	3.5bar (0.35Mpa)
Fluids	Steam, Water, Nitrogen, Air	Max Pressure	4.0Mpa
Size	DN15-DN50	Flow Characteristic	Linear / Equal %
Operation	Normal Close	Temperature	- 20°C to + 280°C
End connection	Flange(DIN, JIS, API); Thread(BSPT, 1/2" DN15)	Leakage rate	ISO 5208 Rate A
		Mounting direction	Horizontal or vertical up

Order Code

Model Description



Dimensions (mm)

JIS, API or DIN flanges

DN	L	H1	H	M	A	D(d)	D1	D2	b	f	n-d
1/2" *	85	48	206	ZG1/4"							
15	146	48	206		φ 85	95	70	51	15	1	4-φ 15
20	146	55	255		φ 85	100	75	56	16	1	4-φ 15
25	167	72	295		φ 116	125	90	68	16	1	4-φ 19
32	190	90	410		φ 165	135	100	76	18	2	4-φ 19
40	190	80	360		φ 172	140	105	81	19	2	4-φ 19

JB79-59, GB9113.11-8 flat flange and GB79.2-94, GB9113.5 concave flange

DN	L	H1	H2*	H	M	A	D(d)	D1	D2	D3	b	f1	f2	n-d	kg
1/2" *	98	48		265	ZG1/4" M16x1.5	φ 85									3.5
20	185	75	110	330		φ 118	115	85	65	58	16	2	4	4-φ 14	13.8
25	185	75	110	330		φ 118	115	85	65	58	16	2	4	4-φ 14	13.8
32	195	88	125	420		φ 167	145	110	85	76	18	3	4	4-φ 18	25.0
40	195	88	125	420		φ 167	145	110	85	76	18	3	4	4-φ 18	25.0
50	220	91	135	430		φ 262	160	125	100	88	20	3	4	4-φ 18	38.0

Note: * 1/2" female thread type; *H2 for 3 way piston valve.

Cv VALUE

Size		15 (1/2")	20	25	32	40	50	65	80
Cv	P1→P2	3.98	6.05	10.49	17.36	21.29	28.80	44.70	67.50
	P2→P3	3.94	8.35	12.23	19.69	24.32	32.42	50.60	77.40

INSTALLATION

