

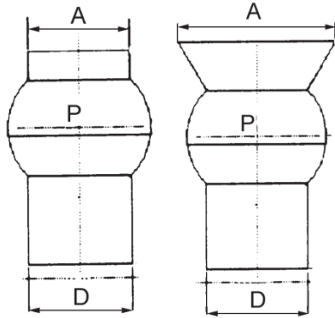
UNIVERSAL BALL

Universal ball, with or without flange, universal and adjustable to any screw conveyor diameter. They make the installation of the screw conveyor easier and more flexible, especially if the exact slope of the conveyor is unknown. There are two installation methods for the universal ball, usually using an enlarged diameter installation, or installed with the same diameter.



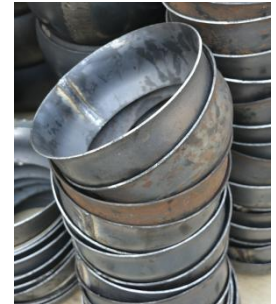
Type 1 (same diameter)

Type 2 (large diameter)



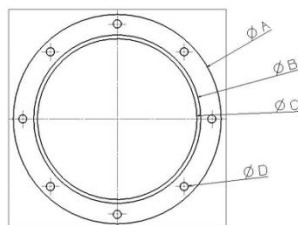
TYPE 1

TYPE 2

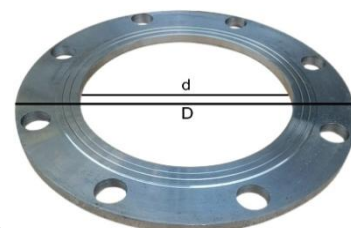


SIZE CODE	D	A(type 1)	A(type 2)
168	168	168	219
168	168	-	273
219	219	219	273
219	219	-	300/323
273	273	273	323
323	323	323	-

Optional :304 stainless steel material



Pipe joint flange



Inlet flange

Type	ϕ	A	B	C	D		N	M	H
					G°	ϕ			
139	139	190	158	148	8	11	5	12	170
168	168	250	170	162	8	11	5	12	220
219	219	275	221	211	8	11	5	12	250
273	273	330	275	265	8	11	5	12	305
325	325	390	328	317	8	13	5	12	360/370
407	407	470	400	390	8	13	5	12	440

Type	Pitch	d	D	Mounting Hole
219	295	222	327	8- ϕ 14 /22
219	295	223	320	12- ϕ 20
273	350	276	380	12- ϕ 22
300	350	300	380	8- ϕ 14
323	395	325	425	12- ϕ 22
325	400	327	430	12- ϕ 23